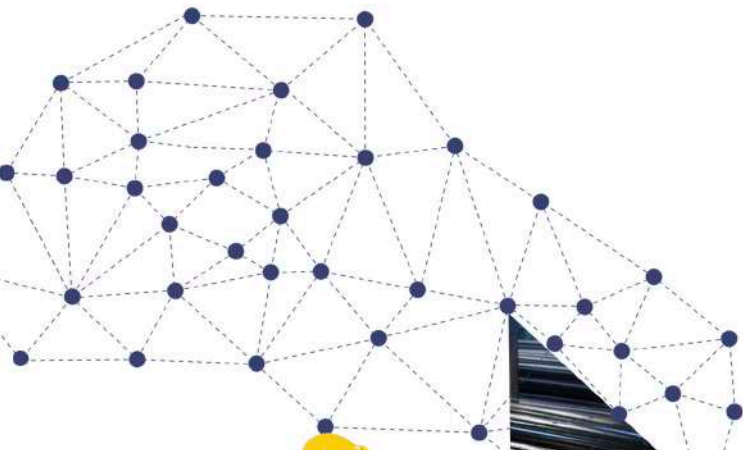


# KWANG SUNG STEEL PIPE



**KWANG SUNG**  
KWANG SUNG STEEL PIPE CO.,LTD

# Company

Kwang Sung Steel Pipe Co., Ltd. is a precision cold-drawn steel tube manufacturer established in 1972.

At Kwang Sung Pipe, we have a broad range of production capabilities to draw ERW and SMLS steel tubes of small and large diameters, producing high-quality drawn steel tubes by realizing the mechanical characteristics of clients' demands.

With over 50 years of accumulated experience in solid drawing and stringent quality assurance, Kwang Sung Steel Pipe has been supplying precision cold-drawn steel tubes to all major industries locally and abroad, including tubes for automobile steering and suspension systems, hydraulic and pneumatic cylinders for heavy construction and farming equipment, and aluminum winding bobbins.

Based on such core capabilities, we are expanding our supply chain by adding parts post-process to the existing drawn materials business at a more competitive price range.

Kwang Sung Steel Pipe promises to meet customers' expectations locally and abroad through consistent technological development and facility investment based on our outstanding product quality.



# Certificate



IATF 16949



ISO 9001



ISO 14001

# A Place of Business



**Headquarters - Manufacturing plant**

148-36, Haeseongsaneop-ro, Seongyeon-myeon, Seosan-si, Chungcheongnam-do, Republic of Korea

TEL +82-41-666-3601 / FAX +82-41-666-3606



**Hwaseong si - Sales branch**

804, StarBD, 11, Sunoeul 2-ro, Hwaseong-si, Gyeonggi-do, Republic of Korea

TEL +82-31-499-1127 / FAX +82-31-499-1129



**Canada - Sales branch and warehouse**

Unit 6, 3610 Odyssey Drive, Mississauga Ontario Canada L5M 0Z9





# History

**1972**

1972. 10.  
Kwang Sung Steel  
Company Found  
(Yeongdungpo-gu,  
Seoul)

**1992**

1992. 03.  
Si-Hwa Industrial  
Factory Relocation

1992. 05.  
Kwang Sung Steel  
Company Co., Ltd.  
Cooperate conversion  
and name change

**2002**

2002. 06.  
ISO9001 & QS9000  
certificate acquisition

**2007**

2007. 01.  
IATF16949 (ISO/TS16949)  
certificate acquisition

**2009**

2009. 04.  
Canada branch office  
establishment

**2010**

2010. 10.  
Coalition with Kwang Sung Tech Co., Ltd.  
(S.M Steel Co., Ltd. Before name change)

**2013**

2013. 06.  
ISO 14001  
certificate acquisition

**2016**

2016. 10.  
Seosan Factory  
expansion relocation

**2018**

2018. 07.  
IATF16949  
certificate acquisition

**2020**

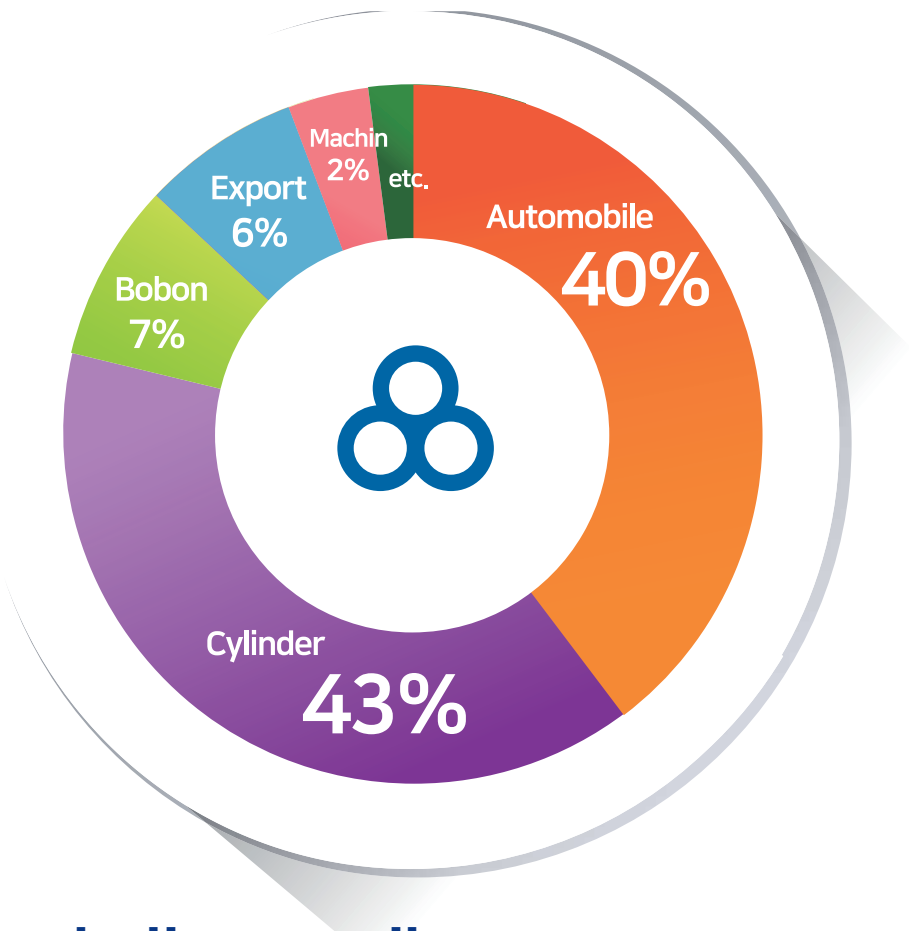
2020. 02.  
Hydraulic and  
Pneumatic cylinder line  
factory construction

**2022**

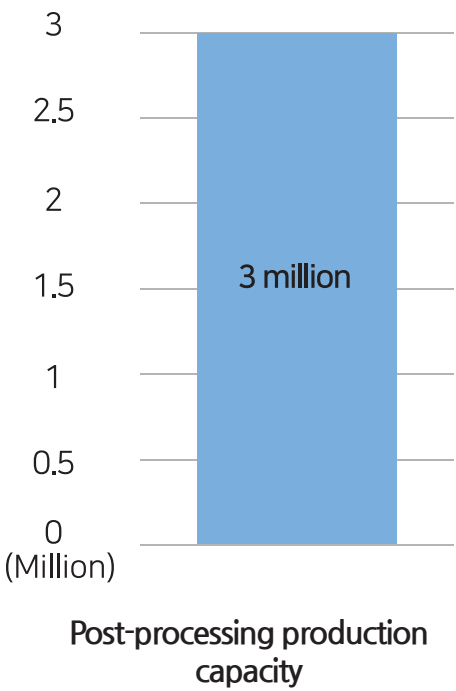
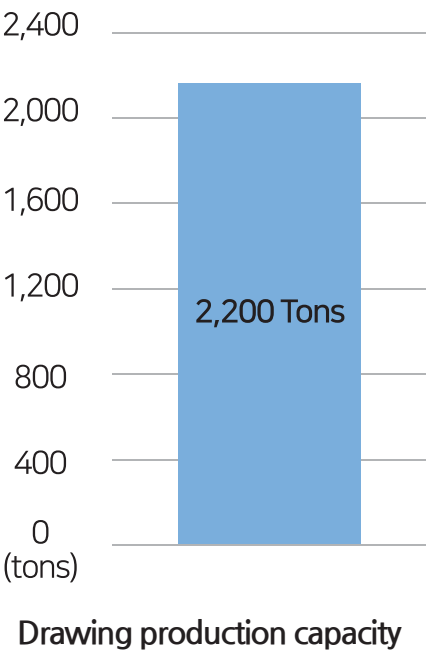
2022. 10.  
Cutting/chamfer factory  
construction and business  
expansion

Product components

As shown below, cold-drawn steel tubes are used in various industries, and we respond to the diverse product demands for cold-drawn steel tubes.



Monthly production capacity



Product Range(Size Range)

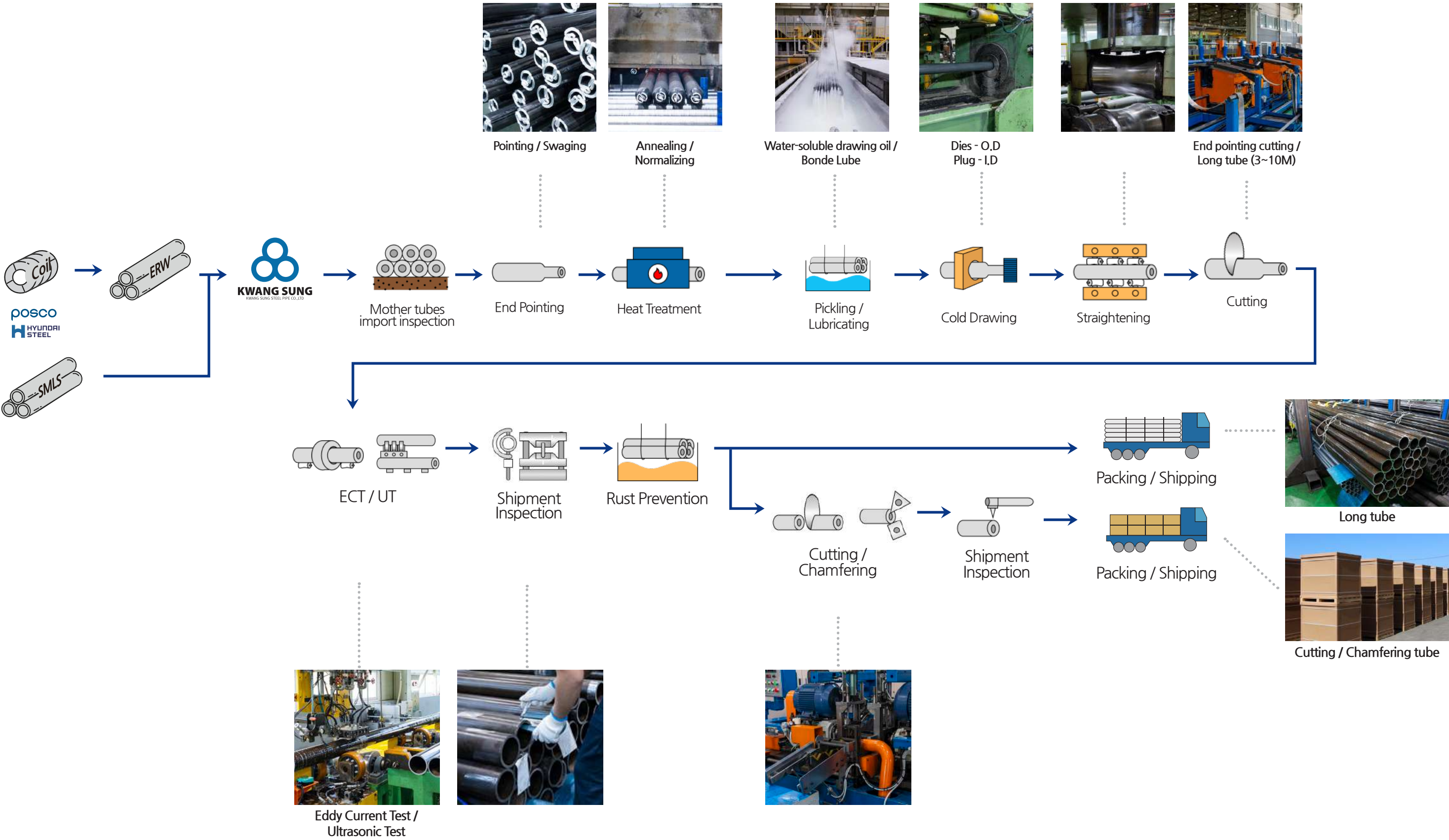
OD (inch)	WT (mm)	(mm)														
		1	2	3	4	5	6	7	8	9	10	11	12	13	14	15
0.5	12.7															
1	25.4															
1.5	38.1															
2	50.8															
2.5	63.5															
3	76.2															
4	101.6															
5	127.0															
6	152.4															
7	190.7															
8	216.3															
9	228.6															
10	254.0															
11	279.4															

Material Table

Standard		Designation	Conditions	Steel Grade
EN	EN 10305-1	Seamless Cold Drawn Tubes	+C, +LC, +SR, +A, +N	E215, E235, E355
	EN 10305-2	Welded Cold Drawn Tubes		E155, E195, E235, E355
	EN 10305-4	Seamless Cold Drawn Tubes for Hydraulic and Pneumatic Power Systems		E215, E235, E355
	EN 10305-5	Welded Cold Drawn Tubes for Hydraulic and Pneumatic Power Systems		E155, E195, E235, E355
ASTM	ASTM A 513	Electric-Resistance-Welded Carbon and Alloy Steel Mechanical Tubing	Type 3, Type 4, Type 5, Type 6	1008 ~ 1045, 4130
	ASTM A 519	Seamless Carbon and Alloy Steel Mechanical Tubing	CW, +A, +N, +SR	1008 ~ 1045, 1541
JIS	JIS G 3444	Carbon Steel Tubes for Genaral Structural Purposes	E-C, S-C	STK290 ~ STK540
	JIS G 3445	Carbon Steel Tubes for Machine Structural Purposes	E-C, S-C	STKM11A ~ STKM16C
	JIS G 3472	Electric-Resistance-Welded Carbon Steel Tubes for Automobile	E-C	STAM290 ~ STAM540
	JIS G 3473	Carbon Steel Tubes for Cylinder Barrels	E-C, S-C, +SR	STC440 ~ STC590 B



# Manufacturing process

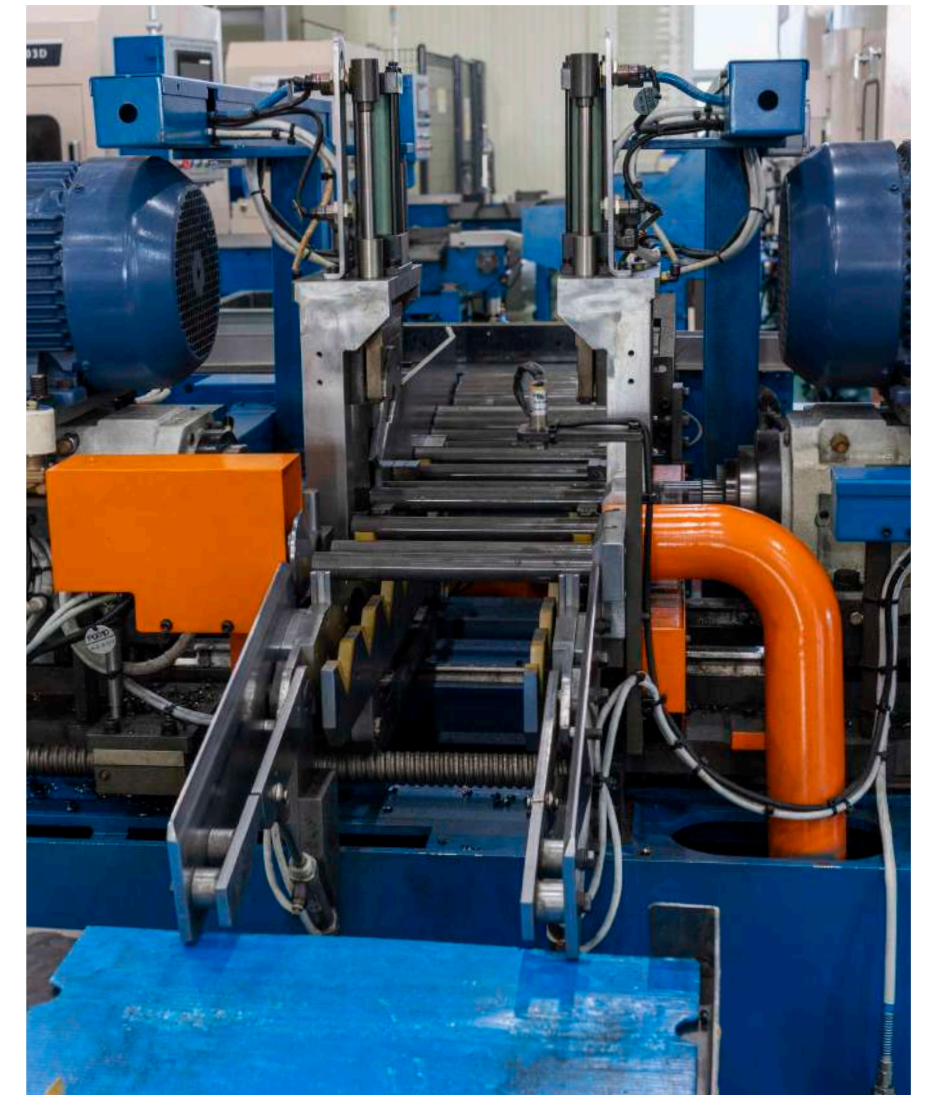




# Parts Processing

We can process components for cold-drawn steel tubes using precision cutting and chamfering machines, buffing machines, cut-off machines with a bite, and boring machines.

## Cutting / Chamfering Machine



## Buffing Machine



## Bite Cutting Machine



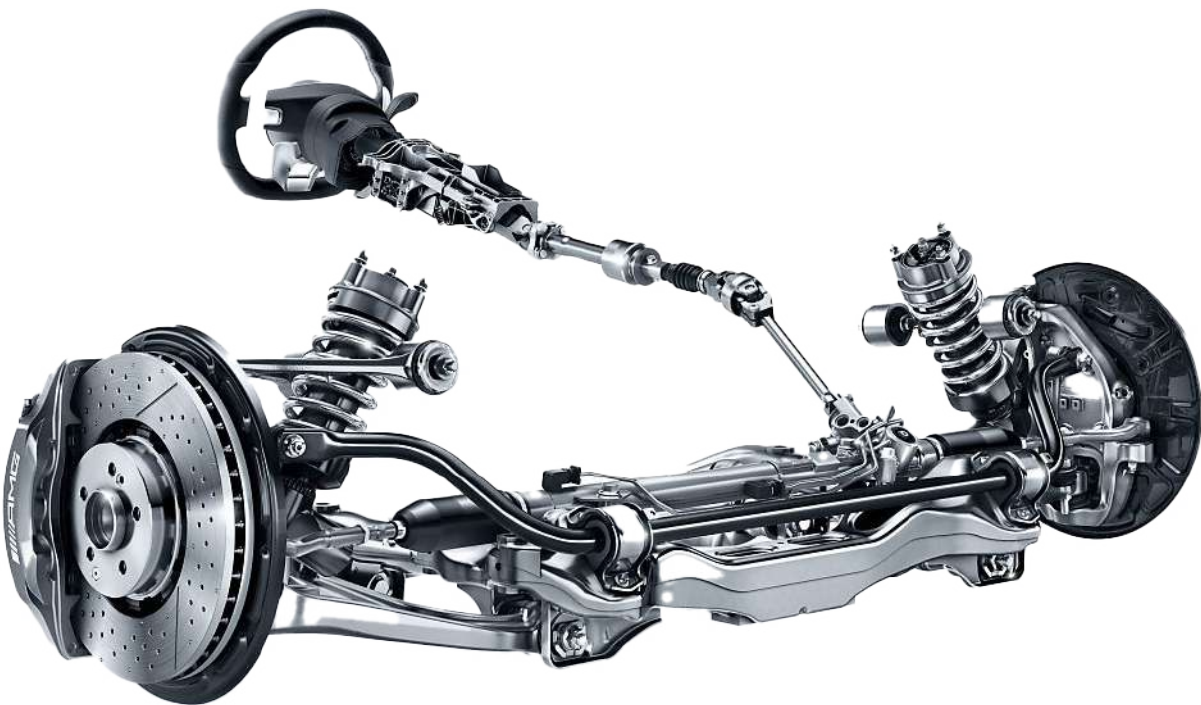
## Boring Machine





# Precision Cold-drawn Steel Tubes for Automotive Parts

We manufacture precision cold-drawn steel tubes with meticulous dimensions for various automotive components like steering systems, suspension, and safety item.



Products  
Steering System

## Automobile Companies Using Our Products



Suspension

Safety Item



# Precision Cold-drawn Steel Tubes for Hydraulic or Pneumatic Cylinder

We manufacture precision cold-drawn steel tubes with meticulous dimensions for pneumatic cylinders in heavy construction equipment and agricultural machinery.



## Products

Hydraulic or Pneumatic Cylinder

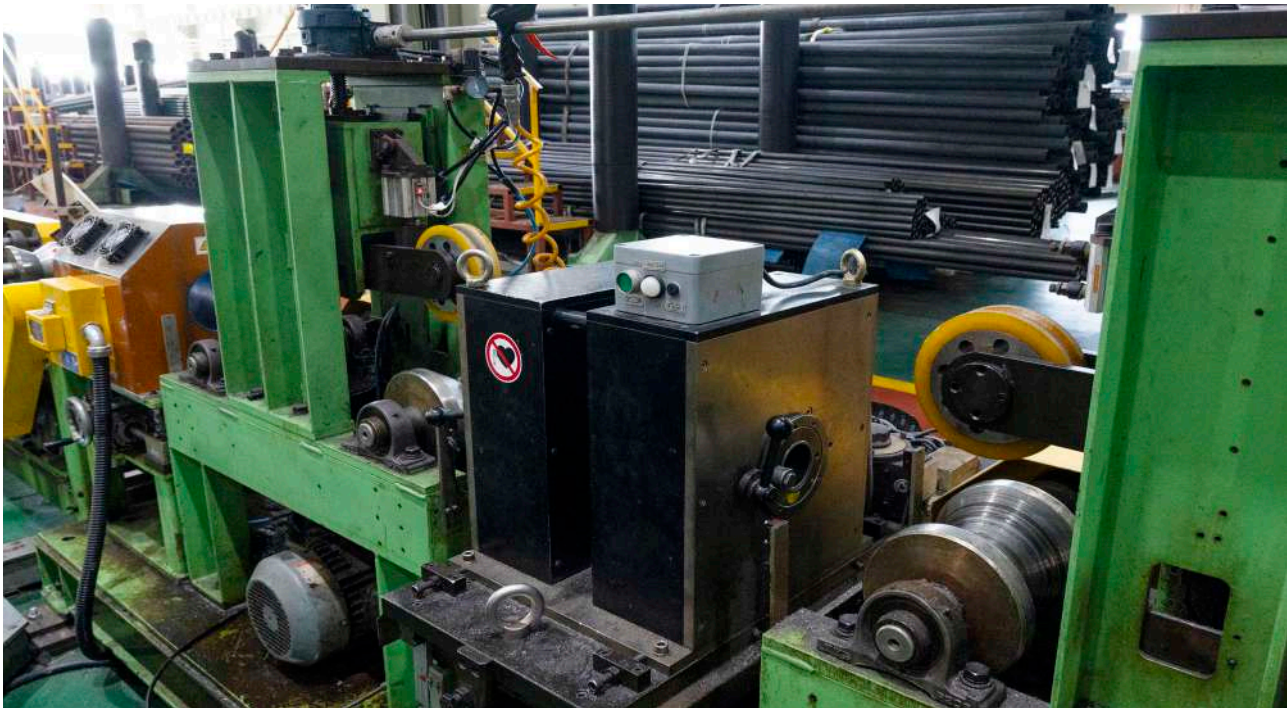
## Heavy Machinery Companies Using Our Products





# Inspection Facility

## Eddy Current Test



## Ultrasonic Test



U.T.M



Stationary metal analyzers



Mini lab heat treatment furnace



Mounting Press



Polishing machine



Hardness Tester



Surface Roughness Tester



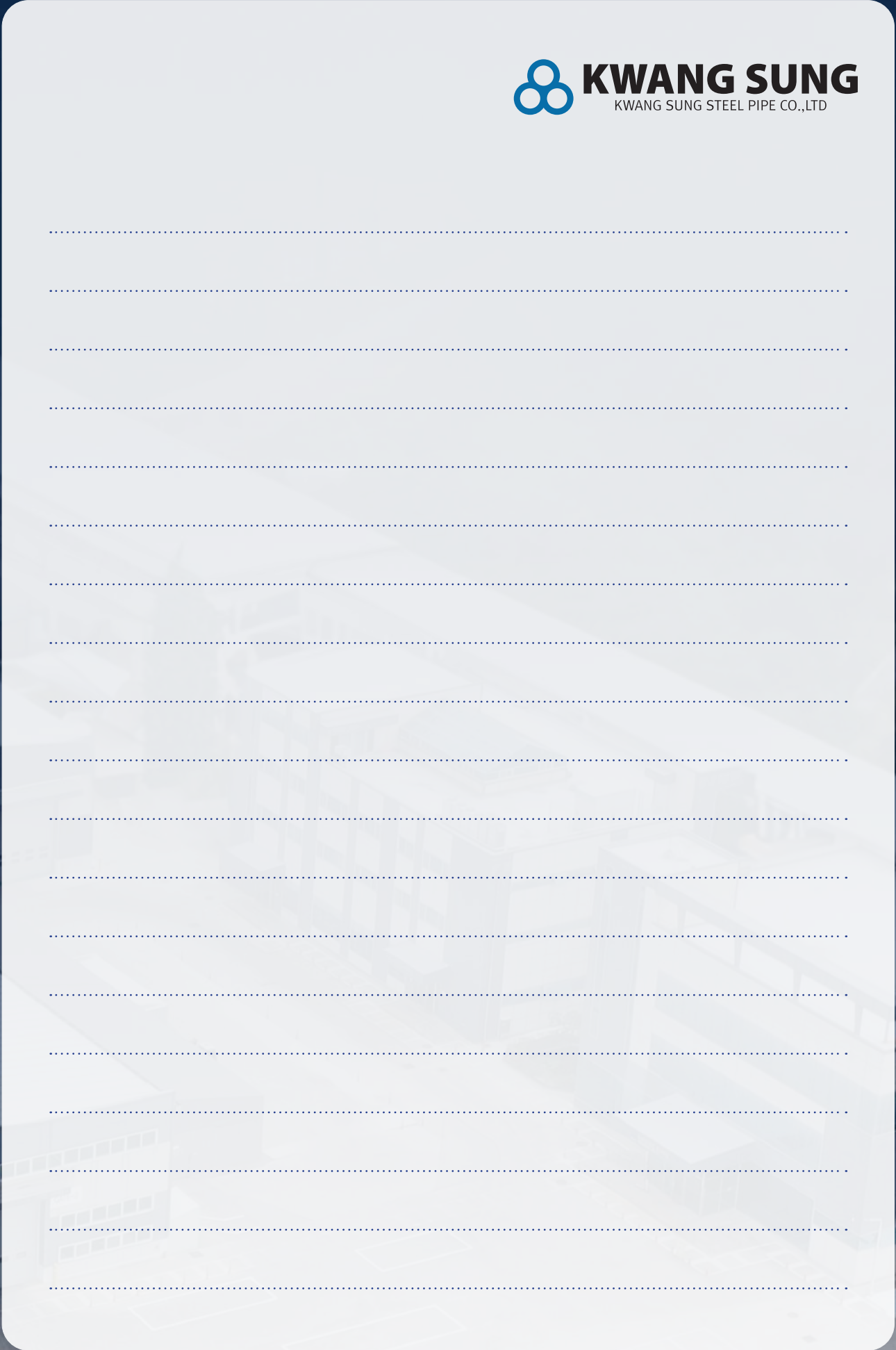
Form Measurement Device



Meta Microscop











**Headquarters** 148-36, Haeseongsaneop-ro, Seongyeon-myeon, Seosan-si, Chungcheongnam-do, Republic of Korea  
**TEL** +82-41-666-3601 / **FAX** +82-41-666-3606

**Contacts** Dong-ryeon Kim, Sales team General Manager, **M.** +82-10-8544-2850 **E.** just46@naver.com  
Yeji Park, Sales team Staff, **M.** +82-10-5160-3070 **E.** sale15@kspipe.com

